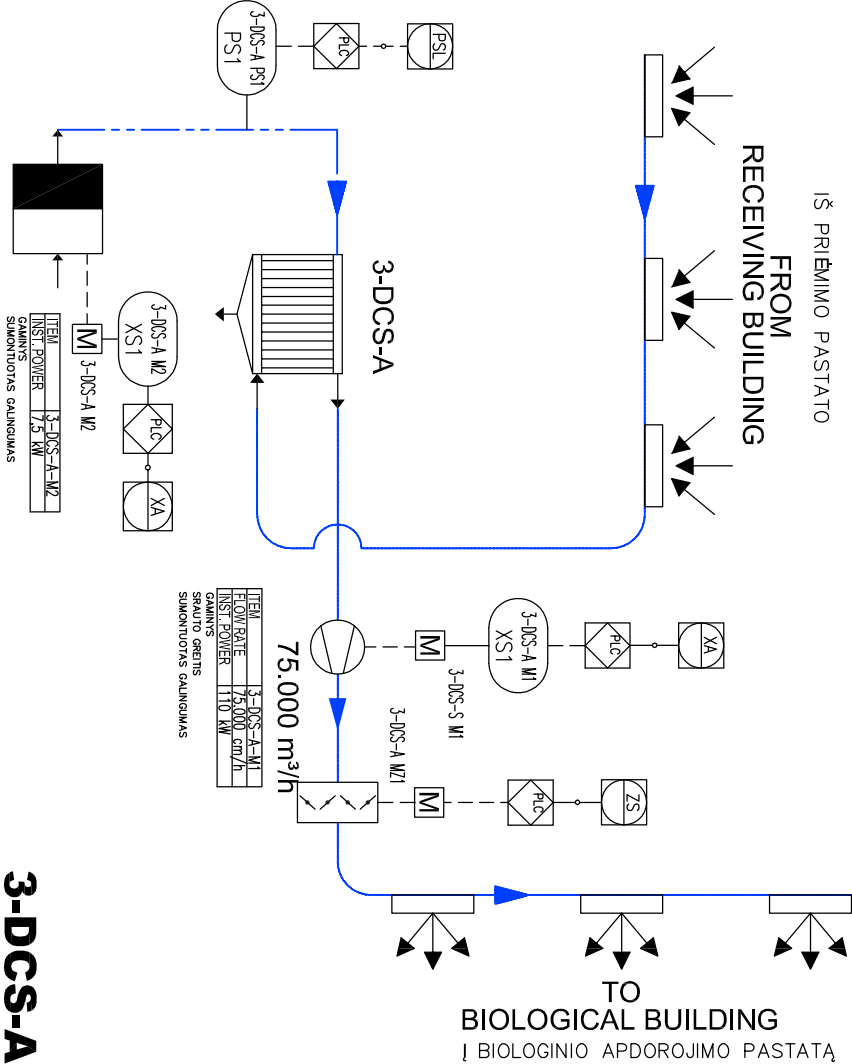
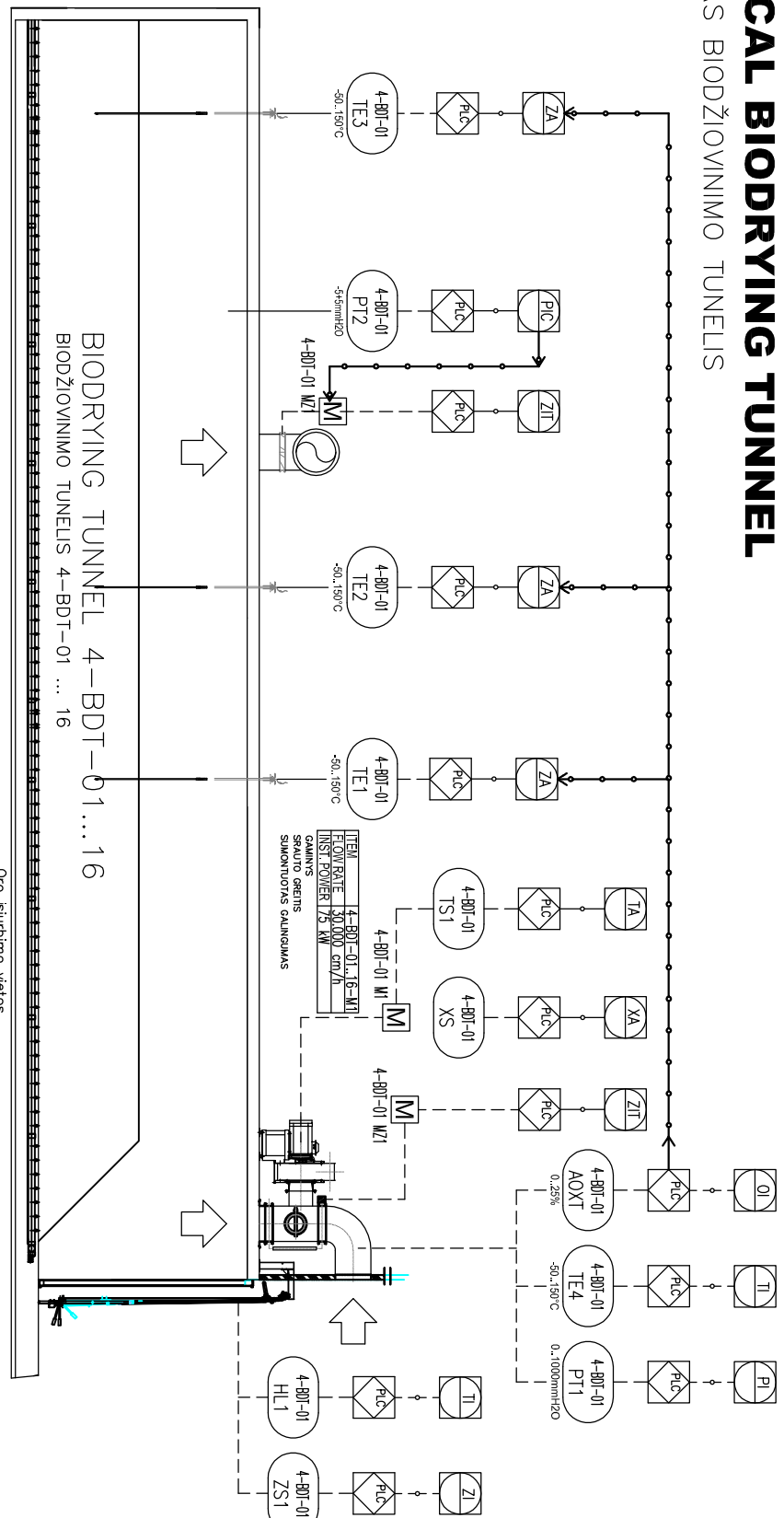


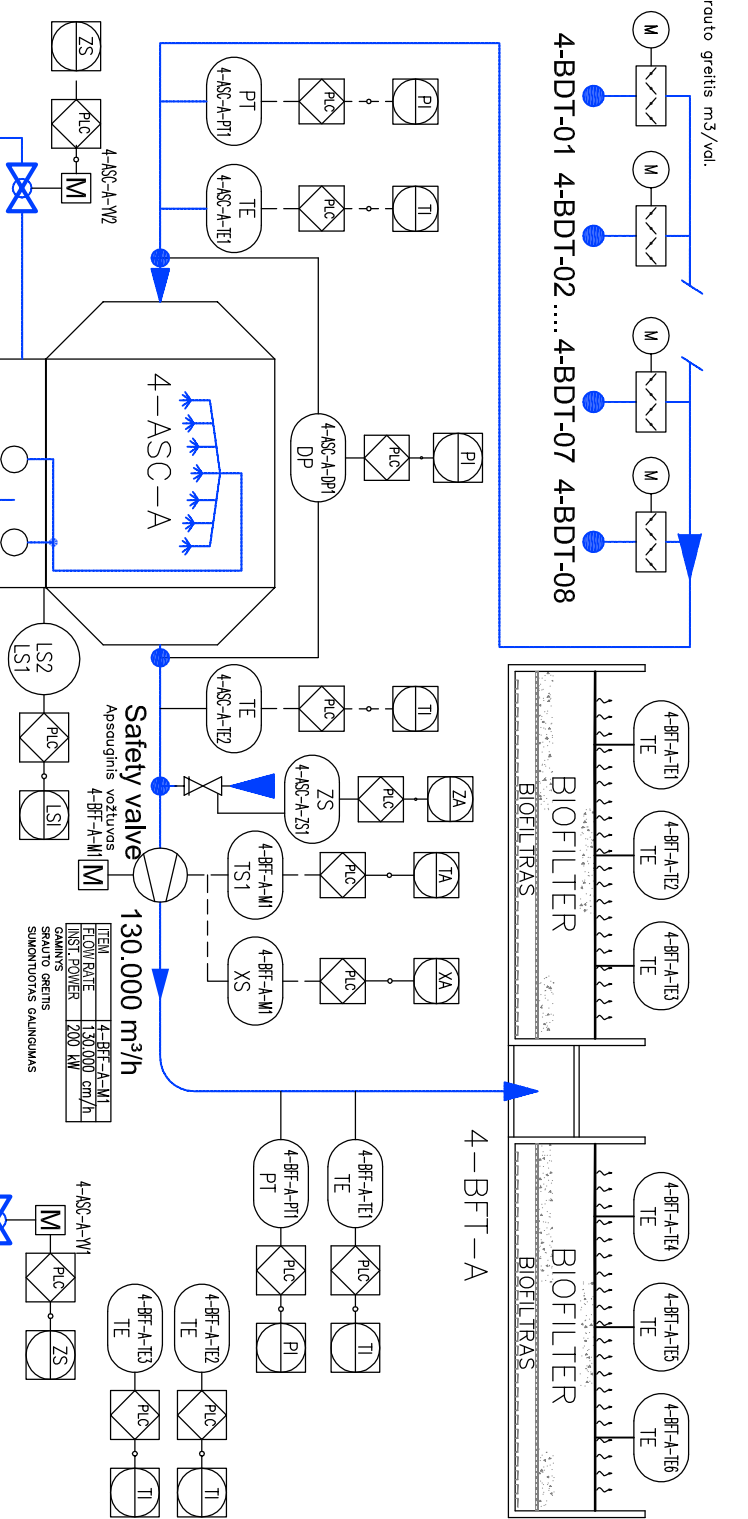
TYPICAL BIODRYING TUNNEL

PRASTAS BIODŽIOVINIMO TUNELIS

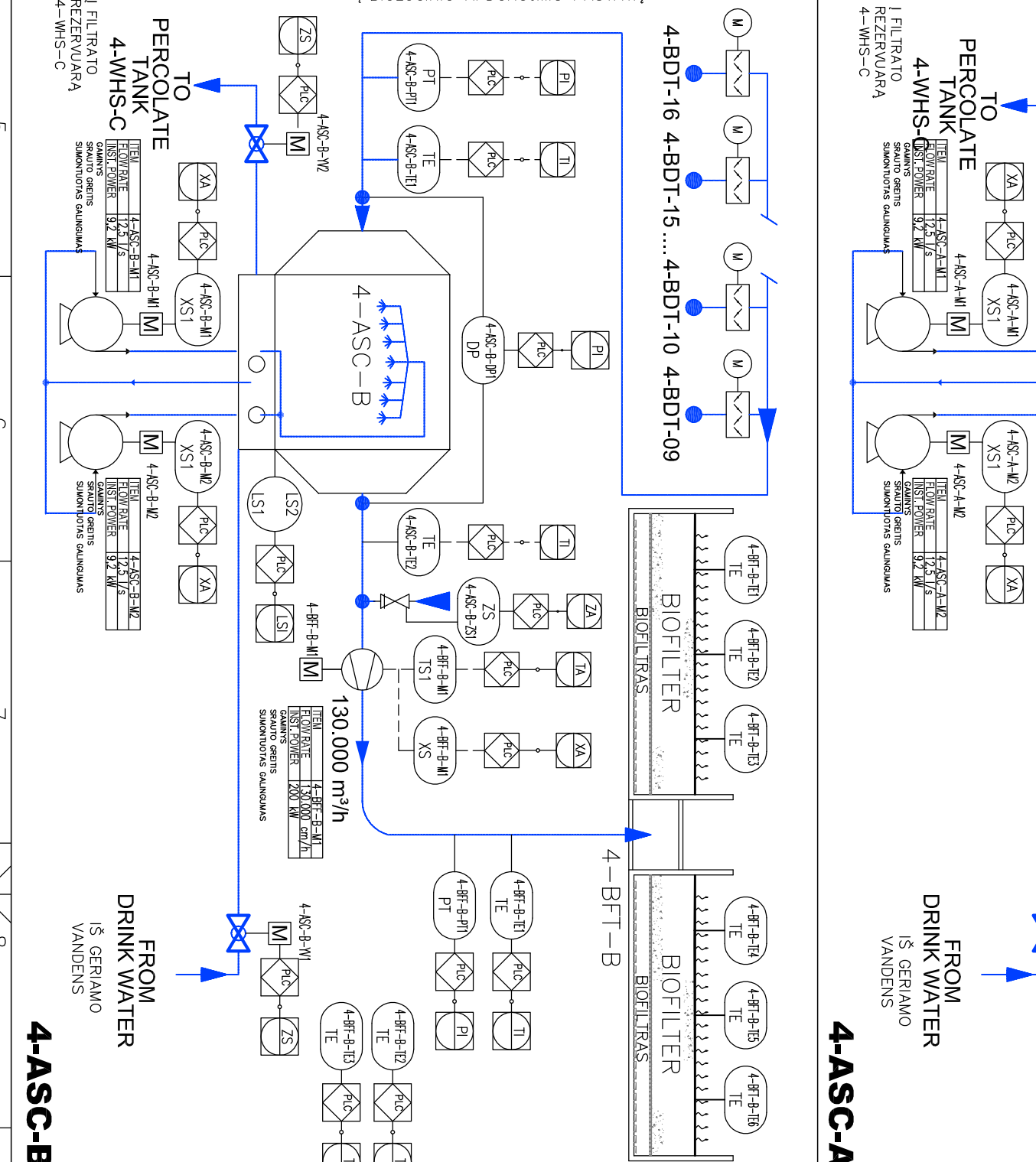
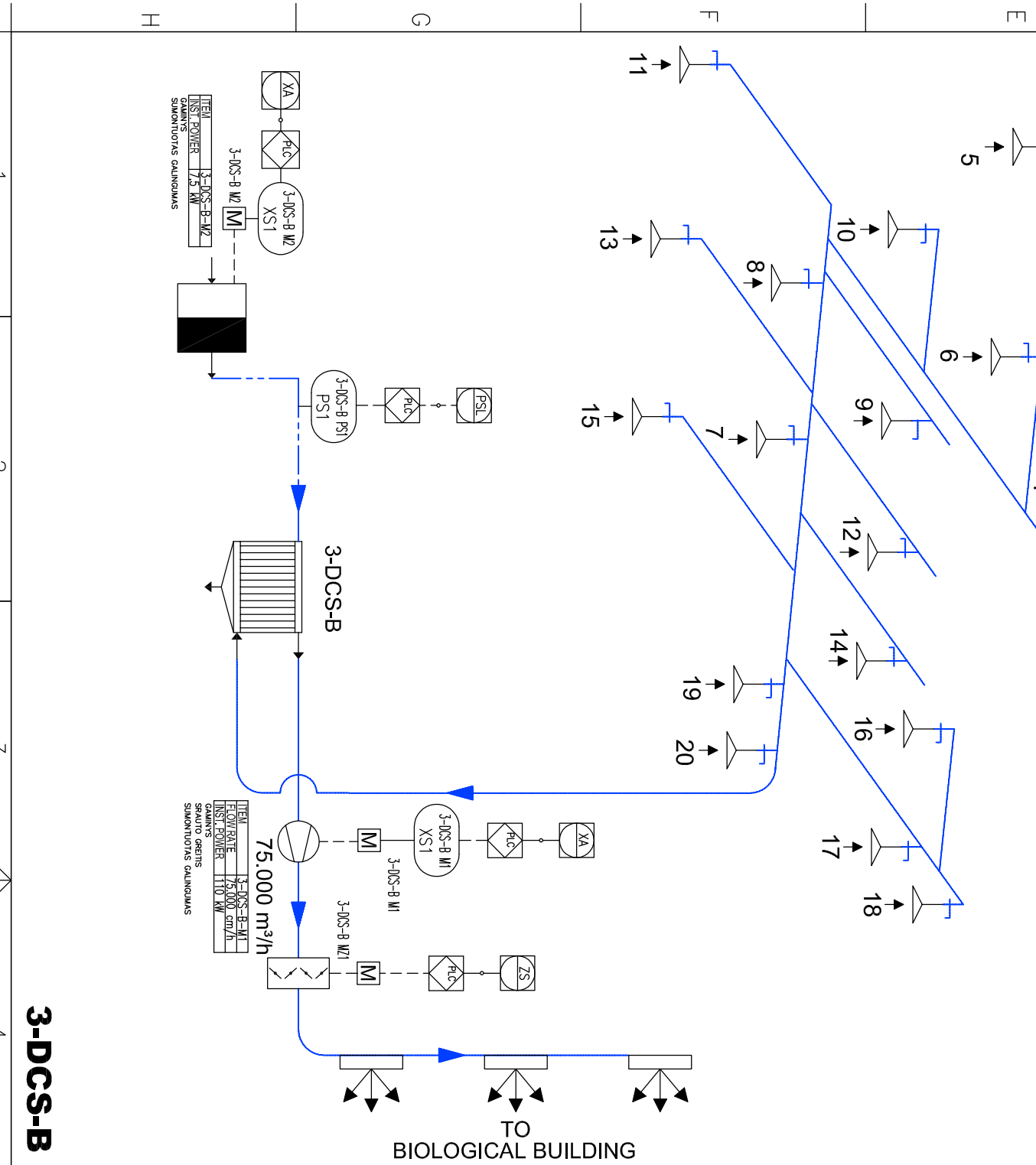


LEGEND		LEGENDA	
	CENTRIFUGAL FAN CENTRIFUGINIS VENTILIATORIUS		AXIAL FAN AŠINIS VENTILIATORIUS
	MANUAL AIR DAMPER RANKINĖ ORO SKLENDE		ELETRICAL AIR DAMPER ELEKTRINĖ ORO SKLENDE
	BAG FILTER RANKOVINIS FILTRAS		CYCLONE CIKLONAS
	HORIZONTAL AIR SCRUBBER HORIZONTALUS ORO SKRUBERIS		AIR COMPRESSOR ORO KOMPRESORIUS
	SILENCER DUSLINTUVAS		AIR TAKE-OFF ORO PAŠALINIMO ANGA
	AIR DIFFUSER ORO DIFUZORIUS		AIR LOUVER ORO IŠORINĖS ŽALUZĖS

Point	Description	Flow rate m³/h
1	Connection point on 1-RTS-A	5,000
2	Connection point on 1-RTS-A	5,000
3	Connection point on 1-RTS-B	5,000
4	Connection point on 1-RTS-B	5,000
5	Connection point on 1-RTS-C	5,000
6	Connection point on 1-RTS-C	5,000
7	Connection point on 3-CN1	3,000
8	Connection point on 3-BAS	5,000
9	Connection point on 3-CN3	3,000
10	Connection point on 3-CN5	3,000
11	Connection point on 3-CN8	3,000
12	Connection point on 3-CN2	2,500
13	Connection point on 3-CN2	2,500
14	Connection point on 3-CN4	2,500
15	Connection point on 3-CN4	2,500
16	Connection point on 3-CN6	3,000
17	Suction hood	3,000
18	Suction hood	3,000
19	Suction hood	4,500
20	Suction hood	4,500
Total air suction flow rate		75,000



1	UPDATED	ATNAUJINTA	MCO	23.01.2015
2	UPDATED	ATNAUJINTA	MCO	22.10.2014
3	Modified	scrubbers pump power	MAV	25.09.2014
4	Updated	Atnaujinto	MCO	09.09.2014
5	added technical values of motors according to the FIDC engineer	pridedus technines varikliu vertes pagal FIDC inžinierius	MAV	05.08.2014
6	ISSUE	IŠLEISTA	LDA	31.01.2014



1	UPDATED	ATNAUJINTA	MCO	23.01.2015
2	UPDATED	ATNAUJINTA	MCO	22.10.2014
3	Modified	scrubbers pump power	MAV	25.09.2014
4	Updated	Atnaujinto	MCO	09.09.2014
5	added technical values of motors according to the FIDC engineer	pridedus technines varikliu vertes pagal FIDC inžinierius	MAV	05.08.2014
6	ISSUE	IŠLEISTA	LDA	31.01.2014